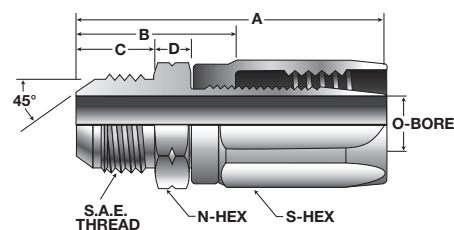
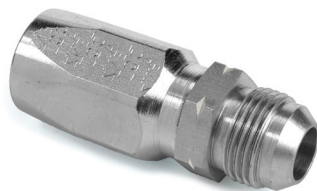




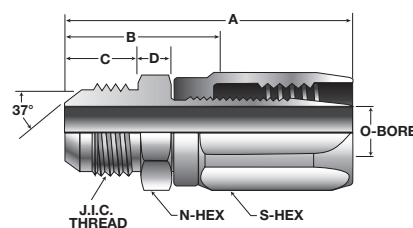
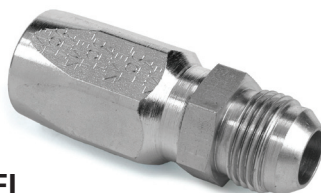
MS
102 S.A.E. MALE FLARE
NON-MANDREL/ZINC PLATED STEEL



100R5 PART NO.	HOSE SIZE	O. D. TUBE SIZE	SAE 45 MALE THREAD	FITTINGS COMP. NIPPLE NUT	PARTS SOCKET	EA. WEIGHT	A	B	C	D	NIPPLE N HEX	O	S HEX
102-4	4	1/4	7/16-20	4102-4	4011-4	0.08	1.80	1.03	0.50	0.19	1/2	0.13	5/8
102-5	5	5/16	1/2-20	4102-5	4011-5	0.10	1.97	1.19	0.56	0.20	9/16	0.17	11/16
102-6	6	3/8	5/8-18	4102-6	4011-6	0.15	2.19	1.28	0.63	0.25	11/16	0.23	13/16
102-8	8	1/2	3/4-16	4102-8	4011-8	0.24	2.66	1.41	0.75	0.25	13/16	0.36	15/16
102-10	10	5/8	7/8-14	4102-10	4011-10	0.38	3.00	1.59	0.88	0.31	15/16	0.45	1 1/8
102-12	12	3/4	1 1/16-14	4102-12	4011-12	0.55	3.50	1.94	1.00	0.58	1 1/8	0.58	1 1/4

For Hose Information See Page 2f

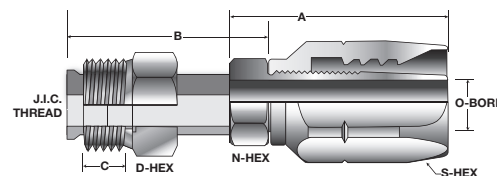
MJ
114 J.I.C. MALE FLARE
NON-MANDREL/ZINC PLATED STEEL



100R5 PART NO.	HOSE SIZE	O. D. TUBE SIZE	JIC 37 MALE THREAD	FITTINGS COMP. NIPPLE NUT	PARTS SOCKET	EA. WEIGHT	A	B	C	D	NIPPLE N HEX	O	S HEX
114-4	4	1/4	7/16-20	4114-4	4011-4	0.08	1.84	1.09	0.56	0.19	1/2	0.13	5/8
114-5	5	5/16	1/2-20	4114-5	4011-5	0.10	1.95	1.17	0.56	0.19	9/16	0.17	11/16
114-6	6	3/8	9/16-18	4114-6	4011-6	0.14	2.13	1.22	0.56	0.25	5/8	0.23	13/16
114-8	8	1/2	3/4-16	4114-8	4011-8	0.24	2.56	1.31	0.66	0.25	13/16	0.36	15/16
114-10	10	5/8	7/8-14	4114-10	4011-10	0.35	2.89	1.50	0.75	0.28	15/16	0.45	1 1/8
114-12	12	3/4	1 1/16-12	4114-12	4011-12	0.50	3.34	1.78	0.86	0.38	1 1/8	0.58	1 1/4
114-16	16	1	1 5/16-12	4114-16	4011-16	0.63	2.94	1.69	0.91	0.39	1 3/8	0.81	1 7/16
114-20	20	1 1/4	1 5/8-12	4114-20	4011-20	1.03	3.13	1.77	0.95	0.42	1 3/4	1.05	1 3/4
114-24	24	1 1/2	1 7/8-12	4114-24	4011-24	1.41	3.42	1.97	1.08	0.50	2	1.28	2

For Hose Information See Page 2f

115 S.A.E.
MALE INVERTED SWIVEL
NON-MANDREL/ZINC PLATED STEEL



100R5 PART NO.	HOSE SIZE	O. D. TUBE SIZE	SAE THREAD	FITTINGS COMP. NIPPLE	PARTS SOCKET	EA. WEIGHT	A	B	C	D	NIPPLE N HEX	O	SOCKET S HEX
115-4	4	1/4	7/16-24	4115-4	4011-4	0.09	2.47	1.72	0.38	0.25	3/8	0.13	5/8
115-5	5	5/16	1/2-20	4115-5	4011-5	0.12	2.63	1.84	0.44	0.31	7/16	0.17	11/16
115-6	6	3/8	5/8-18	4115-6	4011-6	0.17	2.72	1.81	0.44	0.31	1/2	0.23	13/16
115-8	8	1/2	3/4-18	4115-8	4011-8	0.26	3.13	1.98	0.56	0.38	5/8	0.36	15/16
115-10	10	5/8	7/8-14	4115-10	4011-10	0.41	3.65	2.38	0.85	0.38	15/16	.45	1 1/8

For Hose Information See Page 2f